



# **BUHLMANN**

**PROJECT SOLUTIONS**



**CNC  
TECHNOLOGY CENTRE**

**we do it**

Mechanical engineering | Prefabrication | Custom parts



# bps – one-stop shop

**TÜV  
CERT**  
DIN EN ISO 9001:2000  
Zertifikat: 09 100 4154

Finding optimal solutions

bps: member of a strong group

Quality comes first

**BUHLMANN-PROJECT-SOLUTIONS GmbH**, or **bps** for short, is a member of the **BUHLMANN GROUP**. **bps** specialises in project development and implementation as a service provider in the fields of piping and plant engineering.

The Cadolzburg-based firm also offers services in project planning and management, prefabrication and installation as well as mechanical manufacturing and assembly.

**bps** is a one-stop system supplier for your products, reducing your workload to a minimum.

Quality and schedule adherence are **bps'** top priorities.

In addition, **bps** also offers installation of the parts it supplies.

The training of young professionals in the machining industry is of particular importance to **bps**. Our competent, motivated team enables us to be flexible to just about any wishes you may have.

**bps** is a trustworthy partner for the fabrication and machining of standard and custom machine parts as well as intelligent system solutions. You need only one source for all your needs – **bps**.

- Basic design and stress analysis
- Design and technical drawing
- Production, manufacture and machining
- Welding and heat treatment
- Internal quality control
- Testing/third party inspection
- Installation and maintenance



Meeting the highest standards of quality is of the utmost importance at **bps**. A wide range of certifications and standards are used in conjunction with renowned third party inspection companies. Compliance with the corresponding parameters in connection with the latest norms and standards is checked regularly as part of on-line quality control.

#### Certifications

- Quality management to DIN EN ISO 9001
- Quality management to DIN EN ISO 14001
- Occupational health and safety management to BS OHSAS 18001
- 'Specialised company' in accordance with Section 19I of the German Water Management Act
- AD 2000 Merkblatt HPO
- AD 2000 Merkblatt W0
- 2014/68/EU – Module G
- 2014/68/EU – Module A1

#### Welding and materials

- Welding in accordance with DIN EN ISO 3834-2
- Welding procedure qualification records to ASME Section IX
- Carbon steel compliant with DIN EN 10025: S235JR to S355J2G3
- Heat-resistant steel compliant with DIN EN 10028/2: P26GH, 16Mo3, 13CrMo45, 10CrMo910, 15NiCuMoNb5 (WB36), X10CrMoVnB 9-1, X10CrWMoVnB 9-2, 7CrMoVTiB10-10
- Fine-grain structural steel compliant with DIN EN 10028/3: from P355NL1 to P460NL1
- Austenitic stainless steel: 1.4301, 1.4539, 1.4541, 1.4571, 1.4462
- Steel compliant with ASTM A335, A234, A312

#### Test certificates

Products with DIN EN 10204 acceptance test certificates

- Factory certification 2.2
- Inspection certificate 3.1
- Inspection certificate 3.2 (TÜV, LRS, GL)





# CNC Technology Centre

Contract machining and fabrication

## Production range

When it comes to mechanical production, bps has chosen to specialise in the areas of pipe fittings and all sorts of custom parts. Our product range also includes all applicable codes and standards, like DIN, EN, ASME, and ASTM, as well as in-house standards and customer specifications.

### Fittings

- T-pieces (block or contour-milled)
- Reducers (concentric or eccentric)
- Caps, dished/torispherical and hemispherical caps
- Transition pieces
- Elbows
- Socket weld fittings compliant with ASME

### Contour-milled T-pieces

bps has developed a sophisticated system for the production of T-pieces. Through the use of 3D modelling in our CNC machining, bps is able to offer contour-milled T-pieces.

bps' production methods thus result in T-pieces that are markedly different from the usual so-called block T-pieces. For customers, that means higher quality and a significant reduction in weight compared to conventional block tees.

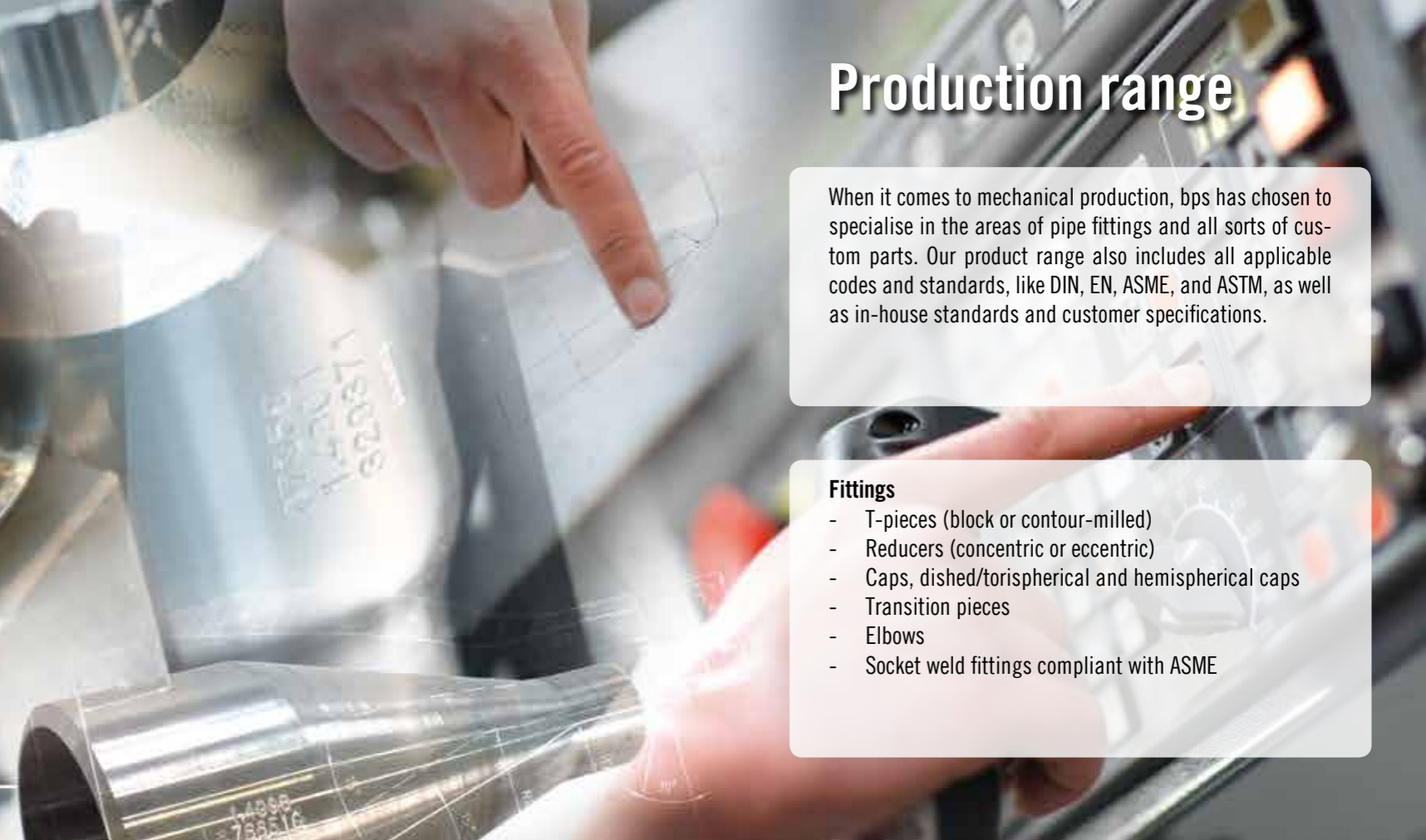


### Prefabrication and contracted cutting

In our five-axis machining centre, bps machines pipe ends as well as all sorts of pipe accessories; for example flanges, elbows, T-pieces and reducers. Welding edge preparation/bevelling of pipes and pipe components up to nominal diameter DN 1200 is done on our machines with form cutters, regardless of the length or thickness of the components. The pipes/pipe components can be chamfered or contoured according to any of the applicable standards (ASME/DIN/DIN EN ISO), or customised to meet individual customer requests.

The drilling and machining of collector pipes to customer drawing is another service bps offers.

With our two large bandsaws, bps can cut round bars, pipes, and profiles up to an outer diameter of 810 millimetres.



### Flanges

- Welding-neck flanges
- Blind flanges
- Slip-on flanges
- Custom flanges
- Connection elements



### Nozzles

- Weld-on nozzles
- Branch Fitting Outlets (BW, SW, NPT, etc.)
- Welding outlets
- Pipe collars, nipples
- Branch saddles



### Custom parts

- Measuring orifices
- Thermowells
- Custom parts to drawings
- Machine parts
- Weld seam preparation (contouring) to ASME B16.25, DIN 2559, and/or DIN EN ISO 9692-1 on pipes up to DN 1200 with wall thicknesses up to 200 millimetres
- Contract cutting up to 810 millimetres in width/diameter



**bps** is a trustworthy partner for the fabrication and machining of standard and custom machine parts as well as intelligent system solutions. From planning to construction, CNC machining, welding, heat treatment to installation, **bps** can fulfil all your needs.

Our ultramodern production facilities can help you complete even the most challenging of projects to the most demanding of standards. Our 3600 square metre production hall has a crane capacity of 54 tons and contains all of the facilities, tools, and machines required for state-of-the-art production in accordance with current international standards.

**Our services in detail**

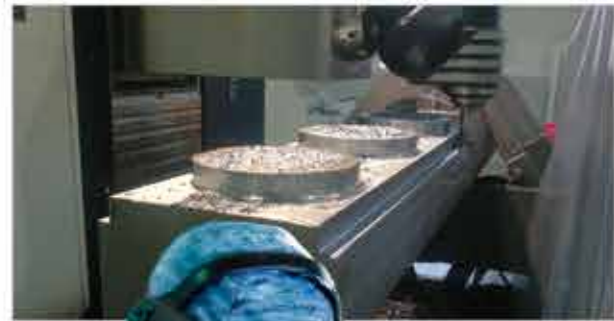
- Basic design and stress analysis
- Design and technical drawing
- Production, manufacture and machining
- Welding and heat treatment
- Internal quality control
- Testing/third party inspection
- Installation and maintenance

# We **CONNECT** the things that belong together

Precise and to schedule

Flexible and modern: software

High-tech to meet your demands

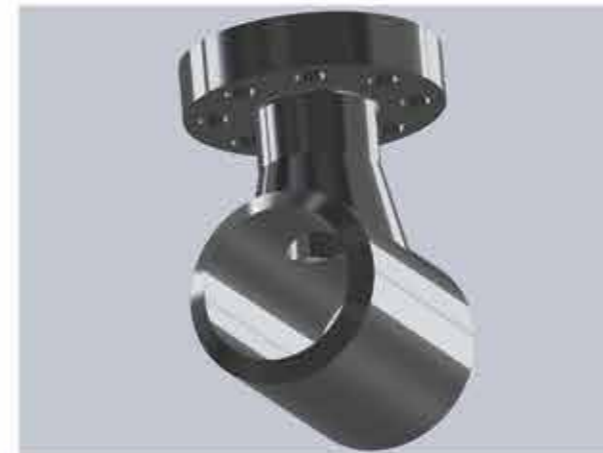


**bps'** area of expertise also includes the worldwide supply, pre-fabrication and installation of complete piping systems and system parts, including fittings, vessels and components:

- Supply of pipe materials and accessories, such as bolts, nuts, gaskets, expansion joints, fittings and threaded joints
- Prefabrication of pipe spools, pressure vessels, pipe fittings and high pressure pipe pieces
- Production of pipe supports and steelwork
- Installation of pipes and components
- Prefabrication and installation of piping in steam turbines
- Construction and piping of steam turbine packages
- Seaworthy packaging in accordance with the HPE packaging standard

Through the use of modern CAD software, **bps** is able to render your project quickly in both 2D and 3D. Our integrated CAD/CAM systems using SolidWorks facilitates production simulations and creates complex machining solutions to achieve optimal cutting and life times for workpieces and tools.

3D modelling of the fabricated components allows free-form surfaces of any kind to be programmed and machined.



Our ultramodern plant and equipment means that we are well-equipped to meet any challenge:

Our five-axis travelling column milling machine enables us to machine workpieces with a diameter of 1500 millimetres and a length of twelve metres. We cover the entire spectrum of work in milling, drilling and turning. Control techniques depend on the job at hand and include traditional methods as well as the latest CNC techniques.







**BUHLMANN-PROJECT-SOLUTIONS GmbH**  
Seckendorfer Str. 8  
D-90556 Cadolzburg, Germany  
Tel. +49 9103 71316-0  
Fax +49 9103 71316-50  
bps@buhlmann-group.com